



## **PolicyLab Social Media Toolkit**

---

*Evidence to Action* Brief: Transitioning to Adult Care: Supporting Youth with  
Special Health Care Needs

- **This toolkit provides the following materials to assist you in disseminating the findings of this research to your networks:**
  - Suggested tweets sharing our *Evidence to Action* brief (slide 3)
  - Suggested tweets sharing the *Policy Brief* (slide 4)
  - Suggested tweets sharing the PolicyLab blog post on the research (slide 5)
  - Suggested tweets to accompany downloadable PolicyLab images to share in social media posts (slides 6 - 11)
  - Suggested tweets about PolicyLab (slide 12)
- **Graphics no longer affect Twitter's character limits and can be included with all suggested tweets. Feel free to tag PolicyLab in images by clicking the "Who's In This Photo?" button before you send a tweet with an image.**
- **Do not hesitate to contact Lauren Walens (WalensL@email.chop.edu) if you have any questions about these materials.**

# SUGGESTED TWEETS FOR POLICYLAB EVIDENCE TO ACTION BRIEF

Transitioning to adult #healthcare is daunting, especially for youth with complex health needs. PolicyLab research: [http://bit.ly/E2A\\_TransitionsOfCare](http://bit.ly/E2A_TransitionsOfCare)

How can we improve the transition from pediatric to adult health care for youth w/ special health needs? New brief: [http://bit.ly/E2A\\_TransitionsOfCare](http://bit.ly/E2A_TransitionsOfCare)

What barriers did you face when you switched from your pediatrician to an adult provider? @PolicyLabCHOP report: [http://bit.ly/E2A\\_TransitionsOfCare](http://bit.ly/E2A_TransitionsOfCare)

.@sophiestream explores how to tackle the barriers that #youth w/ complex needs face when switching to adult care: [http://bit.ly/E2A\\_TransitionsOfCare](http://bit.ly/E2A_TransitionsOfCare)

What policy changes can help youth w/ special health care needs transition into adult care? @PolicyLabCHOP research: [http://bit.ly/E2A\\_TransitionsOfCare](http://bit.ly/E2A_TransitionsOfCare)

@PolicyLabCHOP bridges research and policy in a new Evidence to Action brief on transitioning into adult care: [http://bit.ly/E2A\\_TransitionsOfCare](http://bit.ly/E2A_TransitionsOfCare)

# SUGGESTED TWEETS FOR POLICYLAB POLICY BRIEF

Policy recommendations in this @PolicyLabCHOP brief could have helped Eugene, a vibrant man w/ complex health needs

[http://bit.ly/PolicyBrief\\_TransitioningToAdulthoodIDD](http://bit.ly/PolicyBrief_TransitioningToAdulthoodIDD)

Navigating the healthcare system when a patient w/ an intellectual disability turns 21 is very difficult. Policy brief: [http://bit.ly/PolicyBrief\\_TransitioningToAdulthoodIDD](http://bit.ly/PolicyBrief_TransitioningToAdulthoodIDD)

How can policymakers help youth w/ complex medical needs transition to adult care? A @PolicyLabCHOP brief discusses: [http://bit.ly/PolicyBrief\\_TransitioningToAdulthoodIDD](http://bit.ly/PolicyBrief_TransitioningToAdulthoodIDD)

Policymakers can support health systems & providers in offering the best possible care to those w/ #IDD. Learn more: [http://bit.ly/PolicyBrief\\_TransitioningToAdulthoodIDD](http://bit.ly/PolicyBrief_TransitioningToAdulthoodIDD)

## RECOMMENDATIONS FOR HEALTH CARE SYSTEMS

### **All health care settings should:**

Routinely assess whether adolescents with Intellectual/Developmental Disabilities (IDD) can make their own medical decisions or indefinitely need caregiver support

### **Adult health care settings should:**

Offer sedation services to patients with IDD for common procedures and tests that patients without IDD can generally tolerate without sedation



## RECOMMENDATIONS FOR POLICYMAKERS

### **State Medicaid directors should:**

Identify ways to facilitate a seamless transition to adult Medicaid managed care plans for youth with severe disabilities

### **Federal policymakers should:**

Consider the already excessive waitlists for long-term adult services when shaping any Medicaid reforms that could impact coverage and availability of such services



# SUGGESTED TWEETS FOR POLICYLAB BLOG POST HIGHLIGHTING ONE ADOLESCENT'S JOURNEY

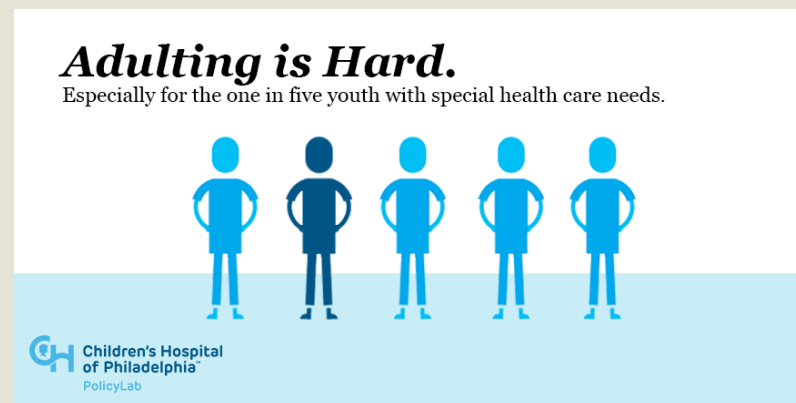
How can we improve the transition from pediatric to adult health care for youth w/ special health needs? Blog post: [http://bit.ly/Blog\\_TransitionsOfCare](http://bit.ly/Blog_TransitionsOfCare)

Entering adult care can be daunting for the 4 million adolescents w/ special #healthcare needs. @PolicyLabCHOP blog: [http://bit.ly/Blog\\_TransitionsOfCare](http://bit.ly/Blog_TransitionsOfCare)

Without changes to transition practices, patients will still flounder b/w pediatric & adult life. @PolicyLabCHOP: [http://bit.ly/Blog\\_TransitionsOfCare](http://bit.ly/Blog_TransitionsOfCare)

A @PolicyLabCHOP blog post discusses programs that help youth w/ special health care needs transition to adult care: [http://bit.ly/Blog\\_TransitionsOfCare](http://bit.ly/Blog_TransitionsOfCare)

Youth w/ complex medical needs are often unprepared to take on the responsibilities of adult care. @PolicyLabCHOP: [http://bit.ly/Blog\\_TransitionsOfCare](http://bit.ly/Blog_TransitionsOfCare)



# SUGGESTED TWEETS FOR POLICYLAB INFOGRAPHICS (JOHN'S STORY)

Download this image here: <http://policylab.chop.edu/file/johns-storyjpeg>

Policy recommendations from this @PolicyLabCHOP brief could have helped John's transition to adult care. Learn more: [http://bit.ly/E2A\\_TransitionsOfCare](http://bit.ly/E2A_TransitionsOfCare)

John's story is familiar to many youth w/ complex medical needs transitioning to adult care. @PolicyLabCHOP brief: [http://bit.ly/E2A\\_TransitionsOfCare](http://bit.ly/E2A_TransitionsOfCare)

Poor care coordination led to unnecessary testing and a huge headache for John's mother. @PolicyLabCHOP research: [http://bit.ly/E2A\\_TransitionsOfCare](http://bit.ly/E2A_TransitionsOfCare)

Patients like John face many barriers when transitioning into adult care. @PolicyLabCHOP provides solutions: [http://bit.ly/E2A\\_TransitionsOfCare](http://bit.ly/E2A_TransitionsOfCare)

## JOHN'S STORY: TRANSITIONING FROM PEDIATRIC TO ADULT CARE



JOHN IS 23 YEARS OLD AND LIVES WITH DOWN SYNDROME, SLEEP APNEA, HEARING LOSS, HIGH CHOLESTEROL, ADHD, OBSESSIVE COMPULSIVE DISORDER, DEPRESSION AND A HISTORY OF OTHER MEDICAL ISSUES.

He continues to require multiple specialists in addition to a primary care doctor to manage his ongoing medical needs. Although he is an adult, he still sees a pediatrician and mostly pediatric specialty providers because his mom has been unable to get help in identifying adult providers who feel equipped to provide his care. Although she managed to find an adult sleep physician, John's mom is usually told that the adult providers who participate with their insurance are not accepting new patients or do

not have experience caring for individuals with Down syndrome. Therefore, John's care has become extremely fragmented. His mom must coordinate this complicated network of care on her own, and faces not only additional demands on her time and resources, but also an increased sense of responsibility to monitor her son's conditions and determine whether he requires medical attention. At times, this has led to unnecessary testing or lab work because there is no coordination around holistic care.

# SUGGESTED TWEETS FOR POLICYLAB INFOGRAPHICS (COMPLEX WEB OF COMMUNICATION)

Download this image here: <http://policylab.chop.edu/file/complex-web-communicationjpeg>

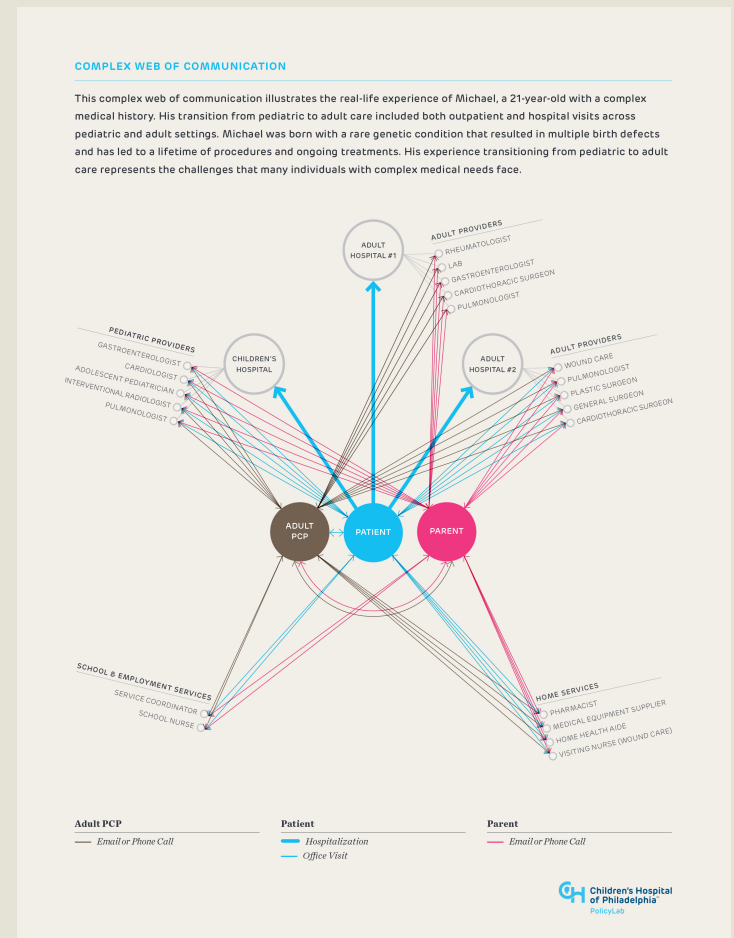
This complex web of communication illustrates Michael's experience coordinating care across multiple systems. Brief: [http://bit.ly/E2A\\_TransitionsOfCare](http://bit.ly/E2A_TransitionsOfCare)

Michael's experience represents the challenges faced by many patients with complex medical needs. Learn more: [http://bit.ly/E2A\\_TransitionsOfCare](http://bit.ly/E2A_TransitionsOfCare)

Many office visits, calls & emails create a complex web of communication for patients & providers. PolicyLab brief: [http://bit.ly/E2A\\_TransitionsOfCare](http://bit.ly/E2A_TransitionsOfCare)

It takes lots of time to coordinate the care that youth w/ complex medical needs receive. Learn more: [http://bit.ly/E2A\\_TransitionsOfCare](http://bit.ly/E2A_TransitionsOfCare)

@PolicyLabCHOP



# SUGGESTED TWEETS FOR POLICYLAB INFOGRAPHICS (GOT TRANSITION SIX CORE ELEMENTS)

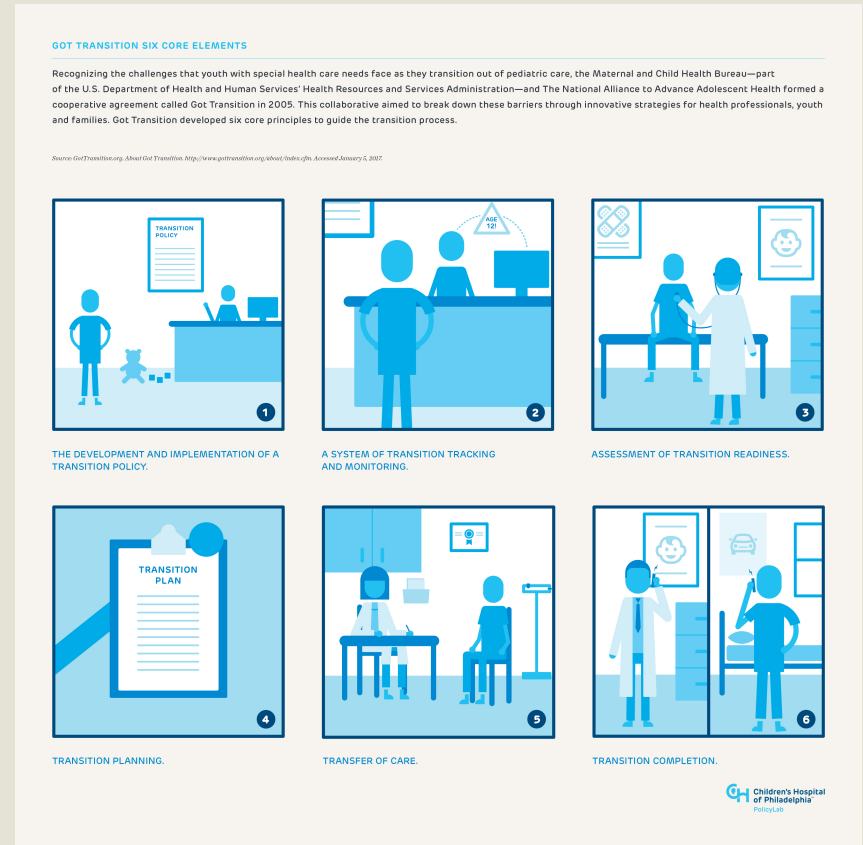
Download this image here: <http://policylab.chop.edu/file/got-transition-six-core-elements.jpeg>

.@GotTransition2 created six core elements to guide the transition to adult health care systems. PolicyLab research: [http://bit.ly/E2A\\_TransitionsOfCare](http://bit.ly/E2A_TransitionsOfCare)

.@GotTransition2's six core elements guide the #transition process from pediatric to adult health care. New brief: [http://bit.ly/E2A\\_TransitionsOfCare](http://bit.ly/E2A_TransitionsOfCare)

A @PolicyLabCHOP study found that many providers are not following @GotTransition2's Six Core Elements. Learn more: [http://bit.ly/E2A\\_TransitionsOfCare](http://bit.ly/E2A_TransitionsOfCare)

Mapping out a plan helps youth w/ special health care needs transition from pediatric to adult health care. Brief: [http://bit.ly/E2A\\_TransitionsOfCare](http://bit.ly/E2A_TransitionsOfCare)





# SUGGESTED TWEETS FOR POLICYLAB INFOGRAPHICS (EPSDT AND SCHOOL SERVICES CLIFF)

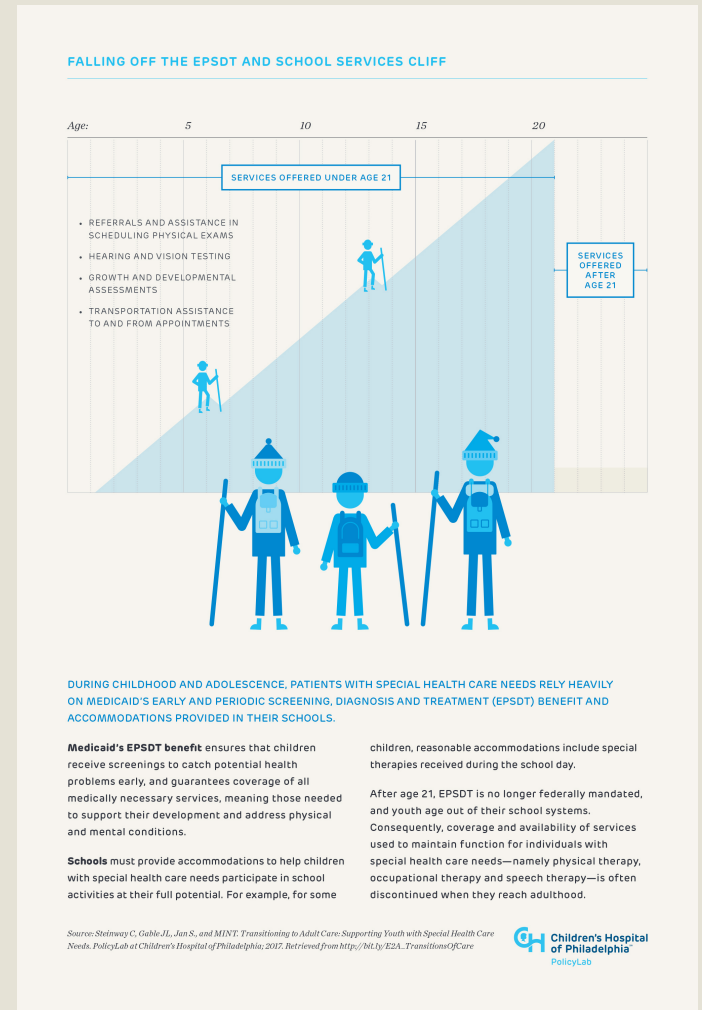
Download this image here: <http://policylab.chop.edu/file/epsdt-and-school-services-cliffjpeg-0>

Young adults with special health care needs lose many #Medicaid services at age 21. New @PolicyLabCHOP brief: [http://bit.ly/E2A\\_TransitionsOfCare](http://bit.ly/E2A_TransitionsOfCare)

When youth with special #healthcare needs turn 21, what happens to their benefits? @PolicyLabCHOP research explores: [http://bit.ly/E2A\\_TransitionsOfCare](http://bit.ly/E2A_TransitionsOfCare)

After age 21, youth with special #healthcare needs lose benefits like #EPSDT and school services. PolicyLab brief: [http://bit.ly/E2A\\_TransitionsOfCare](http://bit.ly/E2A_TransitionsOfCare)

How can we help patients who fall off the #EPSDT and school services cliff at age 21? New PolicyLab brief discusses: [http://bit.ly/E2A\\_TransitionsOfCare](http://bit.ly/E2A_TransitionsOfCare)



# SUGGESTED TWEETS FOR POLICYLAB INFOGRAPHICS (ADULT PROVIDER OPINIONS)

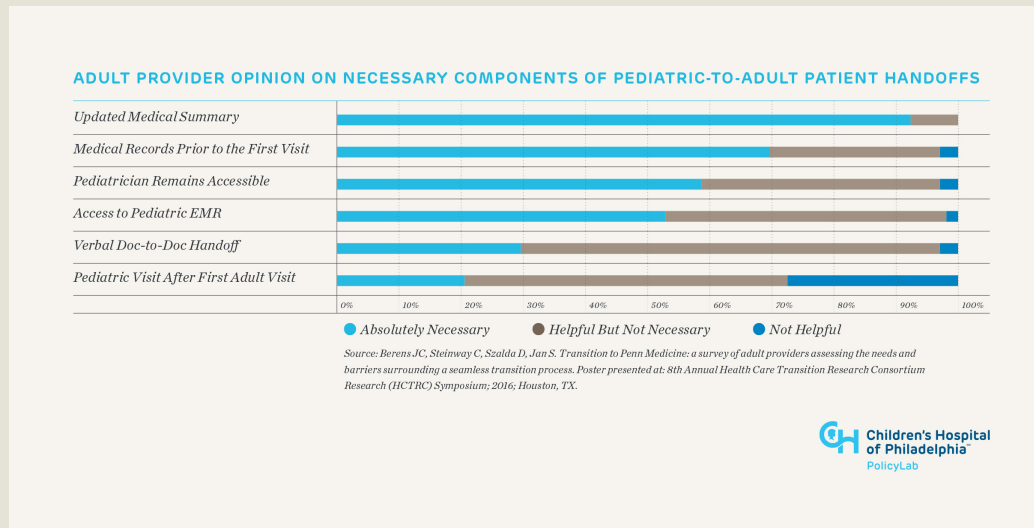
Download this image here:

<http://policylab.chop.edu/file/provider-opinion-necessary-components.jpeg>

Most adult providers in a PolicyLab study reported huge challenges to caring for new young patients w/ complex needs [http://bit.ly/E2A\\_TransitionsOfCare](http://bit.ly/E2A_TransitionsOfCare)

Though it's helpful, many adult providers don't receive an updated medical summary from a patient's #pediatrician: [http://bit.ly/E2A\\_TransitionsOfCare](http://bit.ly/E2A_TransitionsOfCare)

Adult doctors have varying beliefs on the key elements of the pediatric-to-adult handoff. @PolicyLabCHOP brief: [http://bit.ly/E2A\\_TransitionsOfCare](http://bit.ly/E2A_TransitionsOfCare)



## SUGGESTED TWEETS ABOUT POLICYLAB

Learn more about @PolicyLabCHOP's efforts to inform practice & policy to improve child & family health <http://policylab.chop.edu/>

Learn how @PolicyLabCHOP is improving & ensuring insurance coverage, #healthequity & overall #familyhealth  
<http://policylab.chop.edu/>



**For more information,  
please contact  
Lauren Walens**

## **POLICYLAB**

Children's Hospital of Philadelphia  
3535 Market Street, 15<sup>th</sup> Floor  
Philadelphia, PA 19104

**[www.policylab.chop.edu](http://www.policylab.chop.edu)**

267.426.9837

[WalensL@email.chop.edu](mailto:WalensL@email.chop.edu)

**TWITTER: @PolicyLabCHOP**